

# Parkheath

*Sold on Service*

---

**Haverstock Hill NW3**  
**Asking Price £500,000**



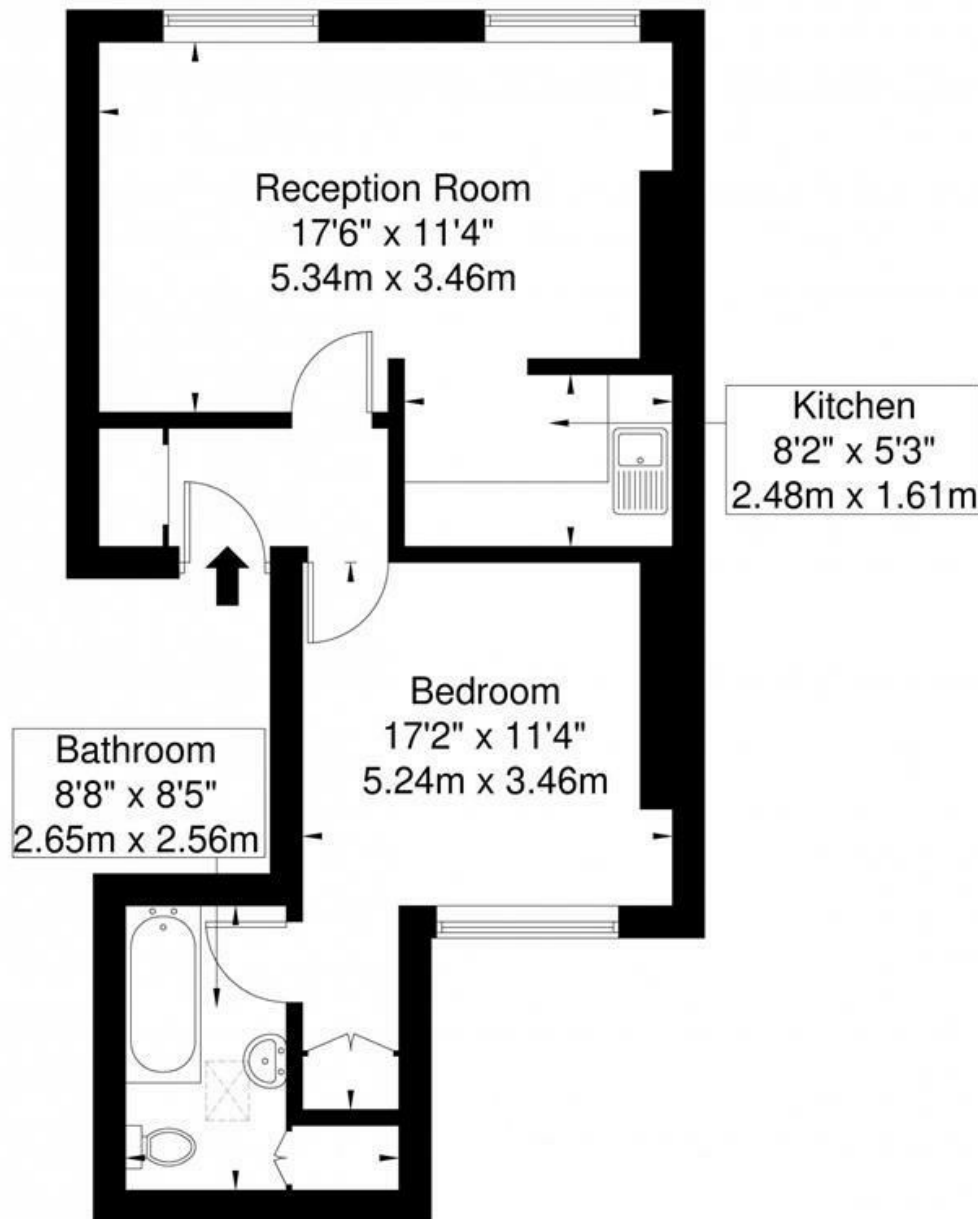
Well presented 1 bed apartment  
Semi-open plan 8` kitchen  
New long lease  
Attractive 17` reception  
No ongoing chain

467 sq ft approx- 2nd floor  
Wood flooring and sash windows  
Good decorative order  
11` bedroom  
Close to Belsize Park and Chalk Farm

Belsize Park Office 020 7431 3104

# Haverstock Hill NW3 2BD

Approx. Gross Internal Area = 43.4sq m / 467 sq ft



## Second Floor

Disclaimer : Floor plan measurements are approximate and are for illustrative purposes only. While we do not doubt the floor plan accuracy and completeness, you or your advisors should conduct a careful, independent investigation of the property in respect of monetary valuation.

The particulars do not constitute part of an offer or contract. The particulars, including text, photographs and plans, are for the guidance only of prospective purchasers/tenants and must not be relied upon as statements of fact. The descriptions provided therein represent the opinion of the author and whilst given in good faith should not be construed as statements of fact. Nothing in these particulars shall be deemed a statement that the property is in good condition or otherwise or that any services or facilities are in good working order. All measurements are approximate.